

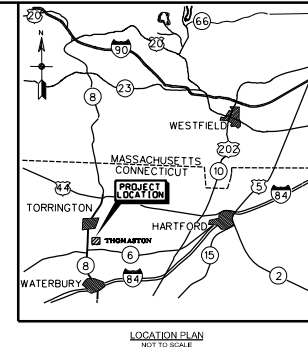


# **PUBLIC WATERLINE EXTENSION**

## **NORTHFIELD BROOK LAKE DAM THOMASTON, CONNECTICUT**

INDEX TO DRAWINGS		
SHEET NO.	DESIGN FILE	SHEET TITLE
1	G-001 HOU-NB-111_G-001.dgn	COVER SHEET AND INDEX
2	G-101 HOU-NB-111_G-101.dgn	GENERAL SITE PLAN
3	C-101 HOU-NB-111_C-101.dgn	SITE PLAN 1
4	C-102 HOU-NB-111_C-102.dgn	SITE PLAN 2
5	C-103 HOU-NB-111_C-103.dgn	SITE PLAN 3
6	C-104 HOU-NB-111_C-104.dgn	SITE PLAN 4
7	C-105 HOU-NB-111_C-105.dgn	SITE PLAN 5
8	C-106 HOU-NB-111_C-106.dgn	SITE PLAN 6
9	C-501 HOU-NB-111_C-501.dgn	DETAILS 1
10	C-502 HOU-NB-111_C-502.dgn	DETAILS 2
11	C-601 HOU-NB-111_C-601.dgn	WATERLINE CONTROL DATA

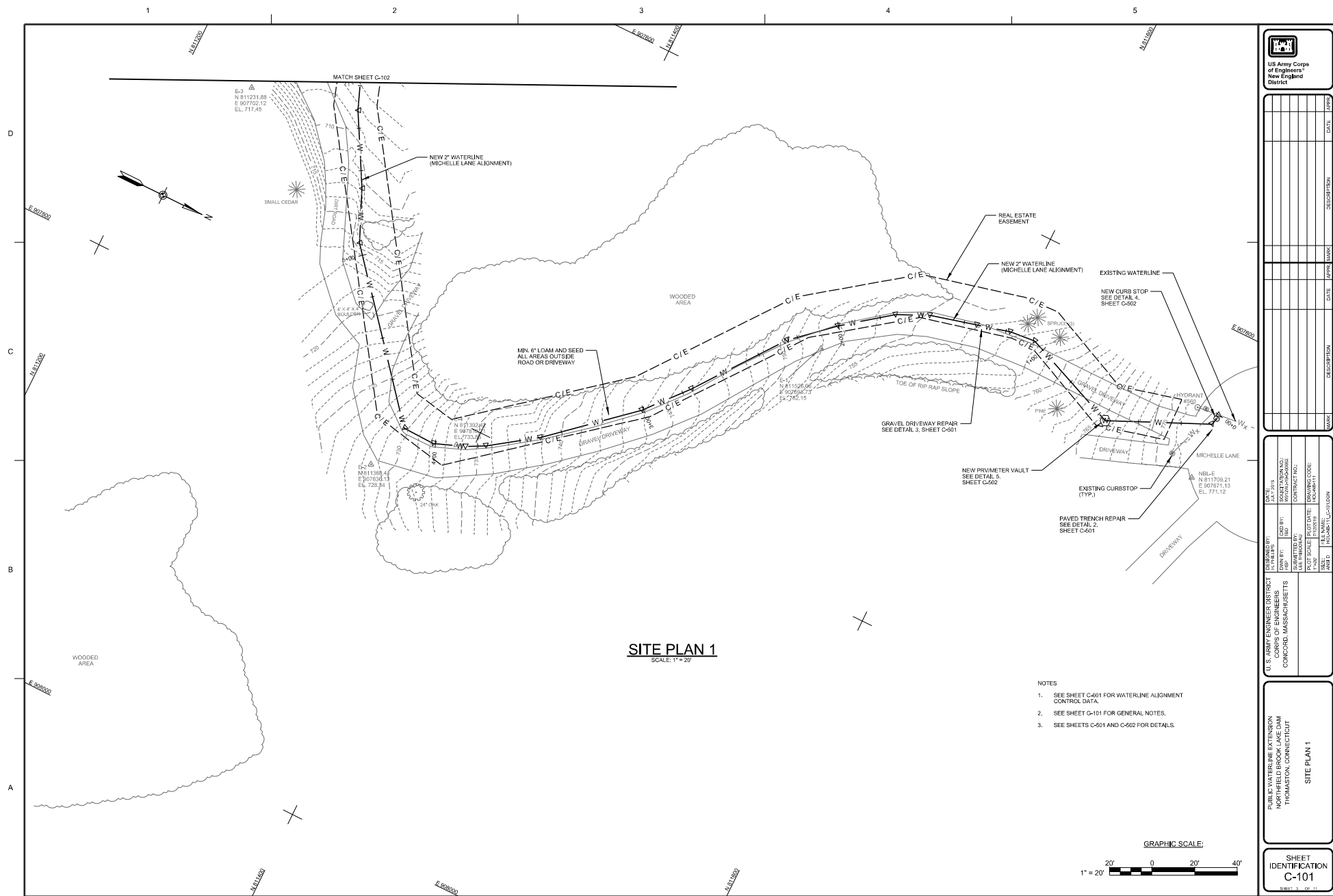
INDEX TO INFORMATION DRAWINGS		
SHEET NO.	DRAWING FILE	SHEET TITLE
1	HOU-32-001.TIF	NORTHEFIELD BROOK LAKE, REHABILITATION OF COMFORT STATION, PLANS, ELEVATIONS, SECTIONS, & PROFILE
2	HOU-32-002.TIF	NORTHEFIELD BROOK LAKE, REHABILITATION OF COMFORT STATION, PLANS, SECTION, DETAILS AND DIAGRAM
2	HOU-13-002.TIF	NORTHEFIELD BROOK DAM SAFE PLAN, SECTIONS, AND DETAILS, AREA A



SIGNATURES AFFIXED BELOW INDICATE OFFICIAL RECOMMENDATION AND APPROVAL OF ALL DRAWINGS IN THIS SET AS INDEXED ON THIS SHEET	
APPROVED FOR TECHNICAL AGENCY BY:	
TECHNICAL LEAD ENGINEER	DATE
REVIEWED BY:	
CHIEF, GEOTECHNICAL/WATER RESOURCES BRANCH	DATE
REVIEWED BY:	
CHIEF, GEO-ENVIRONMENTAL ENGINEERING BRANCH	DATE
APPROVAL RECOMMENDED BY:	
CHIEF, DESIGN BRANCH	DATE
APPROVAL RECOMMENDED BY:	
CHIEF, TECHNICAL SUPPORT BRANCH/DEPUTY CHIEF ENGR	DATE
APPROVED BY:	
CHIEF, ENGINEERING DIVISION	DATE
<p>This project was designed by the U.S. Army Corps of Engineers. The initials or signatures and registration designations of individuals appear on these project documents, within the scope of their employment as required by ESR 1110-4-102.</p>	

[illegible]





US Army Corps  
of Engineers®  
New England  
District

[illegible][illegible]

U.S. ARMY ENGINEER DISTRICT CORPS OF ENGINEERS CONCORD, MASSACHUSETTS		DESIGNED BY: J. L. PHILLIPS	DATE: JUL 7 1919
DOWN BY: FSD	QCD BY: HED	SOLICITATION NO.: W7224-PC-00002	
SUBMITTED BY:		CONTRACT NO.:	
PLOT SCALE:	PLOT DATE:	ISSUING CODE:	
1"=200'	7/10/2019	VO-NEP-111	
SIZE:	FILE NAME:		
A3X D	HOLAB-1L_C-10.DWG		

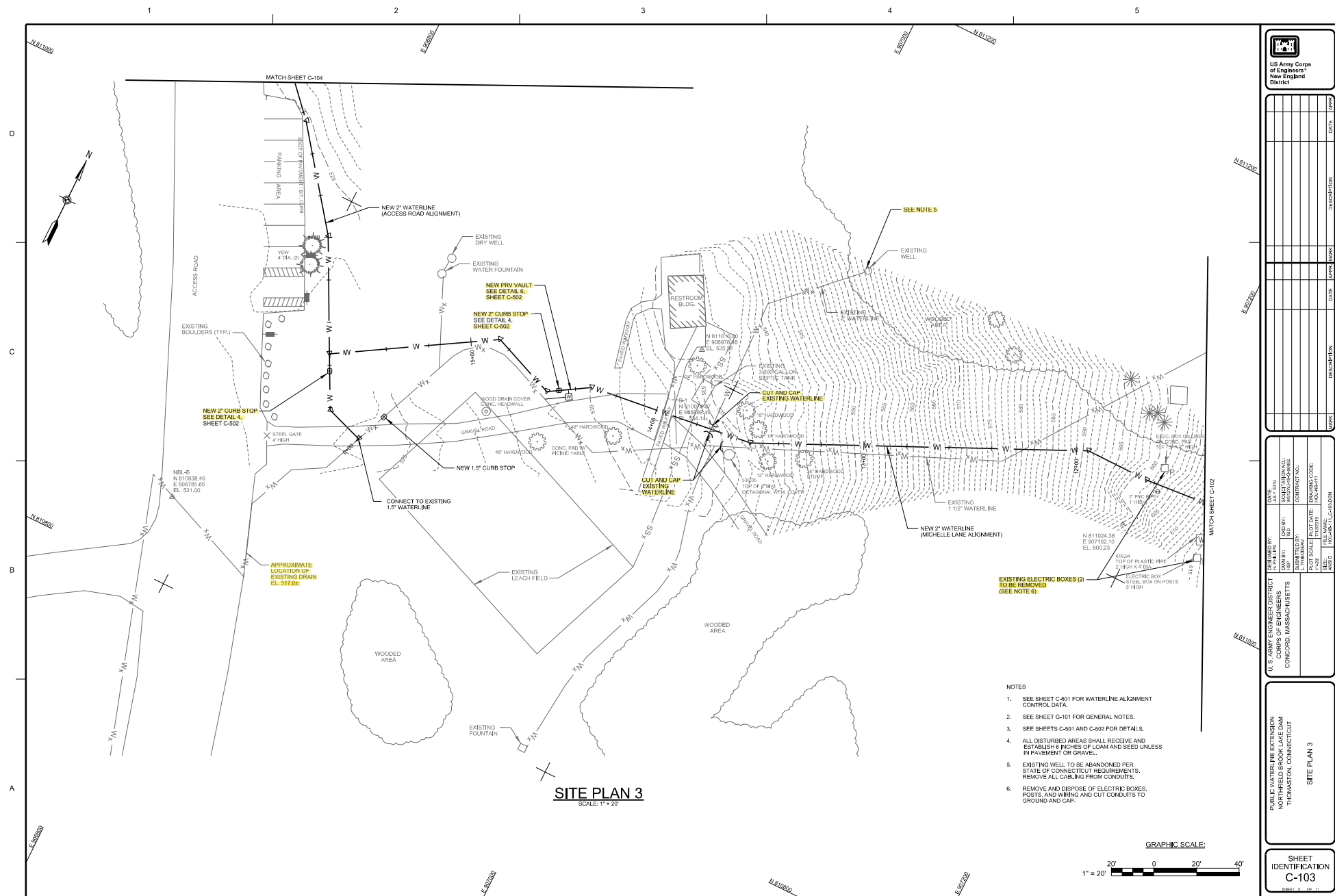
PUBLIC WATERLINE EXTENSION  
NORTHFIELD BROOK LAKE DAM  
THOMASTON, CONNECTICUT

SITE PLAN 1

SHEET  
IDENTIFICATION  
C-101

SHEET 3 OF





US Army Corps  
of Engineers®  
New England  
District

[illegible]

U. S. ARMY ENGINEER DISTRICT CORPS OF ENGINEERS CONCORD, MASSACHUSETTS		DESIGNED BY: R. PHILLIPS	DATE: JULY 1979
DRAWN BY: J. HAD	CHECKED BY: J. HAD	SOLUTION NO.: P979-10-0000	
QUANTITY BY: J. HAD	CONTRACT NO.:		
		DRAWING CODE: HOU-NE-11	
SHEET: AND D	TITLE NAME: HOU-NE-11-C-0000		

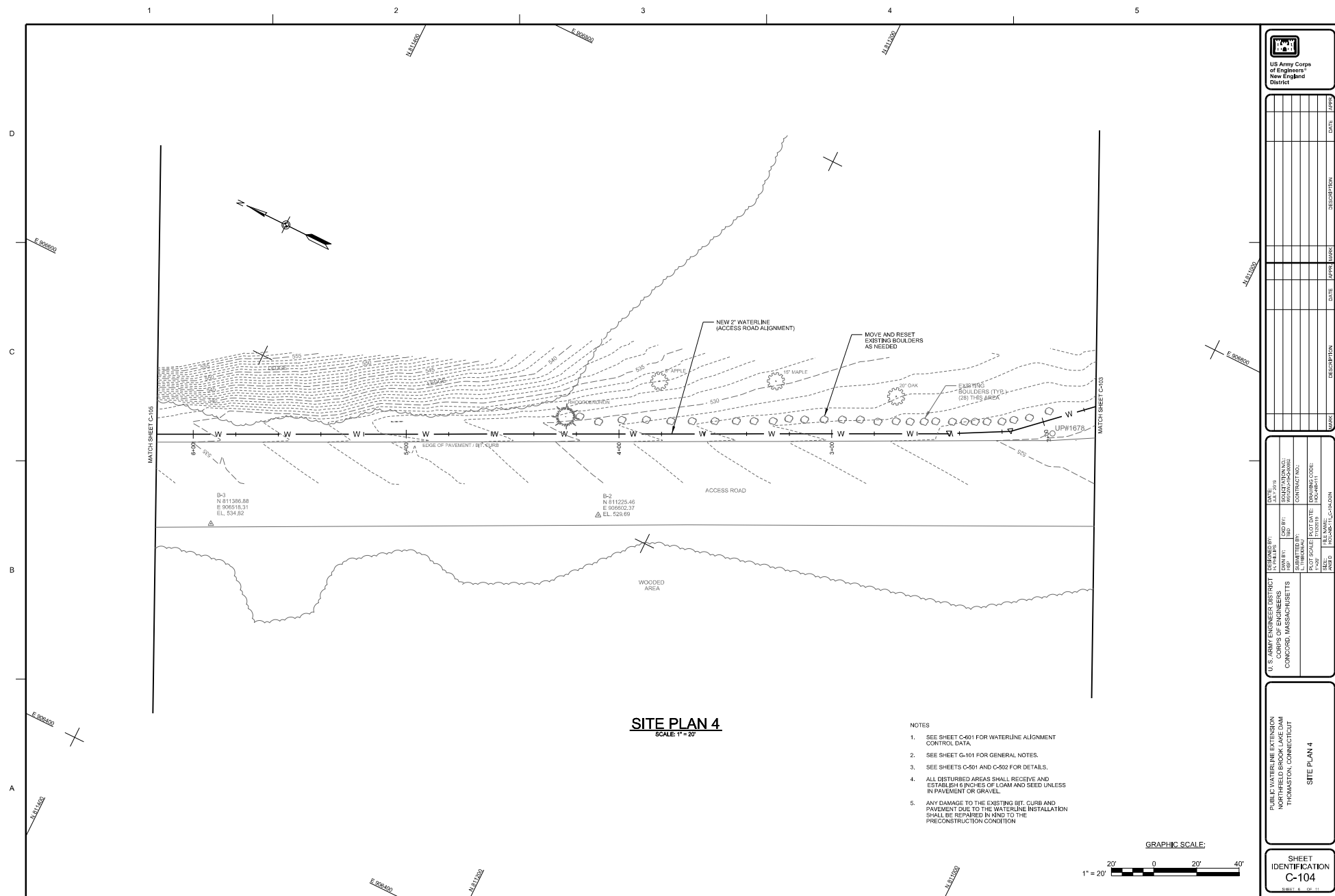
PUBLIC WATERLINE EXTENSION  
NORTHFIELD BROOK LAKE DAM  
THOMASTON, CONNECTICUT

SITE PLAN 3

SHEET  
IDENTIFICATION  
C-103

SHEET 5 OF 6





US Army Corps  
of Engineers®  
New England  
District

[illegible]

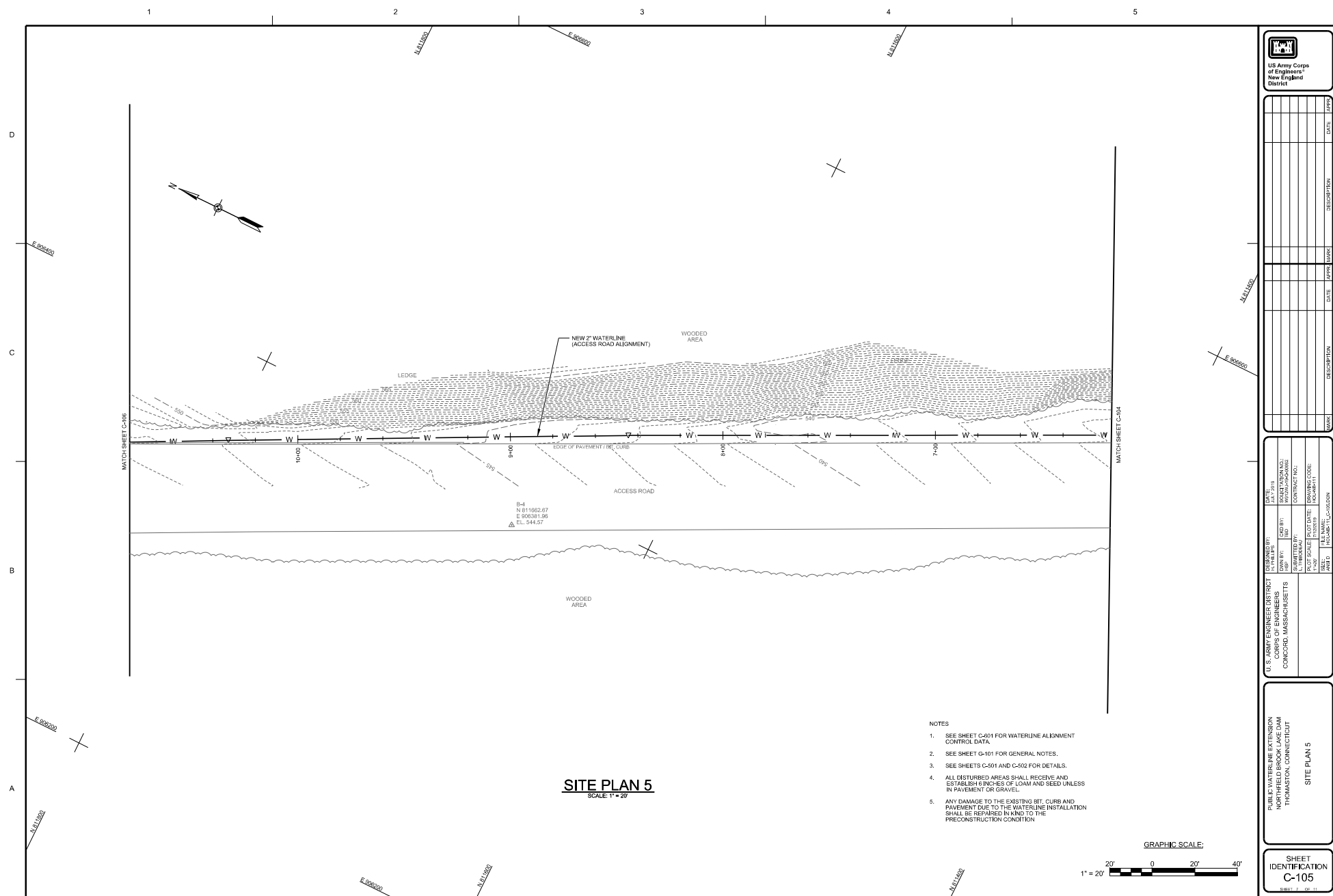
U. S. ARMY ENGINEER DISTRICT CORPS OF ENGINEERS CONCORD, MASSACHUSETTS		DESIGNED BY: R. PHILLIPS	DATE: JULY 1979
DRAWN BY: J. HAD	CHECKED BY: J. HAD	SOLUTION NO.: SPRINTERS-POSSING	
QUANTITIES BY: S. HIRSHMAN	CONTRACT NO.:		
	DRAWING CODE: HOU-NB-11		
SHEET: AND D	TITLE NAME: HOU-NB-11-CONCORD		

PUBLIC WATERLINE EXTENSION  
NORTHFIELD BROOK LAKE DAM  
THOMASTON, CONNECTICUT

SITE PLAN 4

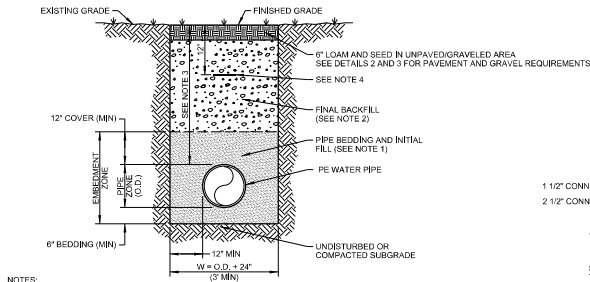
SHEET  
IDENTIFICATION  
C-104

SHEET 6 OF 10







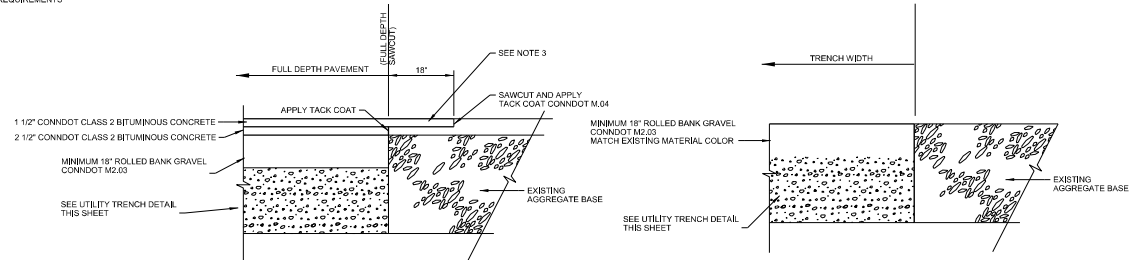


NOTES:

1. PIPE BEDDING AND INITIAL FILL MATERIAL SHALL MEET CONNECTICUT WATER REQUIREMENTS FOR SELECT GRAVEL. CONNECTION REQUIREMENTS WITHIN THE EMBEDMENT ZONE SHALL BE IN ACCORDANCE WITH TOWN REQUIREMENTS IN ROAD AND CONNECTION WATER SPECIFICATIONS IN ALL OTHER AREAS
2. FINAL BACKFILL MATERIAL AND COMPACTION REQUIREMENTS SHALL BE IN ACCORDANCE WITH CONNECTICUT WATER SPECIFICATIONS AND IN MICHELLE LANE THE ROAD EXCAVATION PERMIT REGULATIONS.
3. DEPTH OF WATER PIPE SHALL NOT BE LESS THAN 2'-0" FROM FINISHED GRADE.
4. INSTALL BURIED WARNING AND IDENTIFICATION TAPE FOR WATER PIPING. MINIMUM 12" ABOVE PIPE.
5. BRACING AND SHEETING OR OTHER TRENCH PROTECTION TO BE PROVIDED TO MEET APPLICABLE STATE AND O.S.H.A. SAFETY STANDARDS. SUCH TRENCH PROTECTION TO BE THE RESPONSIBILITY OF THE CONTRACTOR.

## 1 UTILITY TRENCH DETAIL

NOT TO SCALE

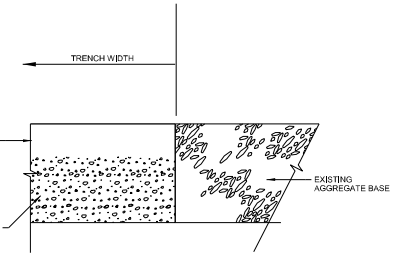


## NOTES

1. CUT BACK 12" MINIMUM IN AREAS THAT ARE UNDERMINED OR DISTURBED.
2. APPLY TACK COAT ON ALL SAWN AND MILLED SURFACES.
3. MILL 1 1/2" OF EXISTING PAVEMENT SURFACE 18" BEYOND FULL DEPTH SAWCUT FOR OFFSET JOINT; APPLY TACK COAT PRIOR TO PLACEMENT OF PAVEMENT WEARING COURSE

2 PAVEMENT DETAIL  
NOT TO SCALE

NOT TO SCALE



### 3 GRAVEL DRIVE DETAIL

NOT TO SCALE



US Army Corps  
of Engineers®  
New England  
District

[illegible]

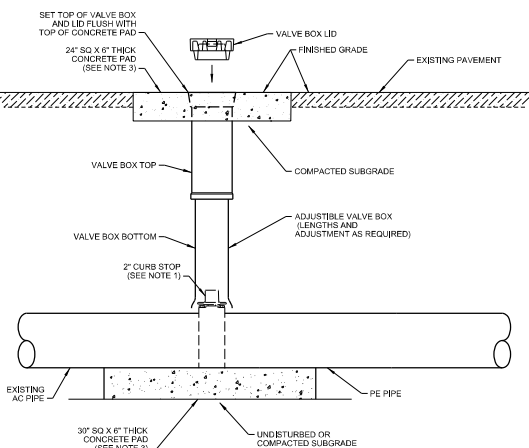
U. S. ARMY ENGINEER DISTRICT CORPS OF ENGINEERS CONCORD, MASSACHUSETTS	DESIGNED BY: H. S. PHILLIPS	CHECKED BY: TBD	DATE: JUL 7 1919
	DRAWN BY: L. THOMPSON	SCALE: 1" = 10'	WELDED BY: H. S. PHILLIPS
	SUBMITTED BY: L. THOMPSON	NOT SCALE:	WELDED DATE: NOV 1911
	SIZE: ANSI D	FILE NAME: HOLLAND-TL COAT 120N	CONTRACT NO.:
			WELDED TON NO.:

**PUBLIC WATERLINE EXTENSION  
NORTHFIELD BROOK LAKE DAM  
THOMASTON, CONNECTICUT**

## DETAILS 1

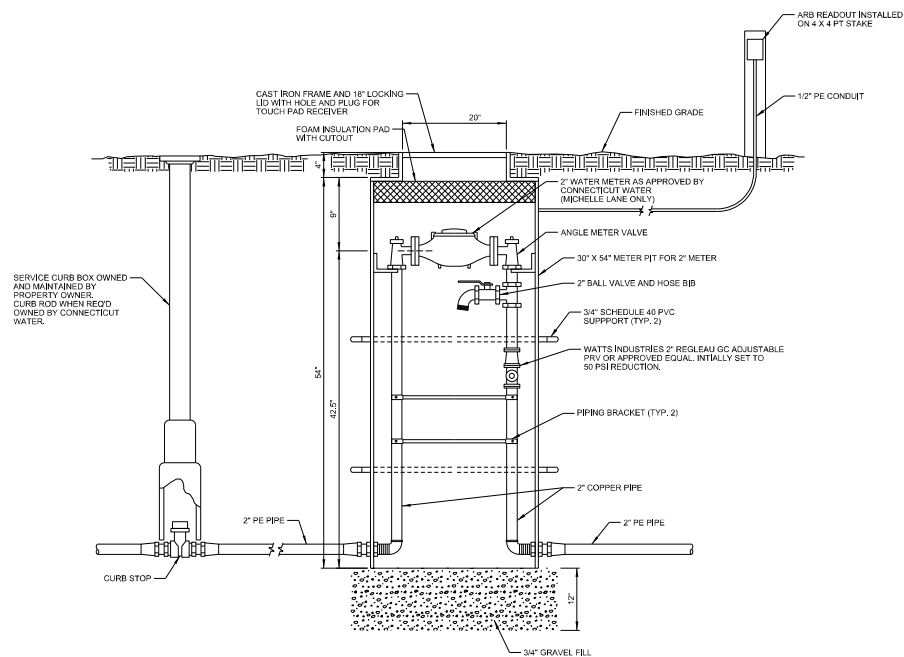
SHEET  
IDENTIFICATION  
C-501

SHEET 2 OF 11

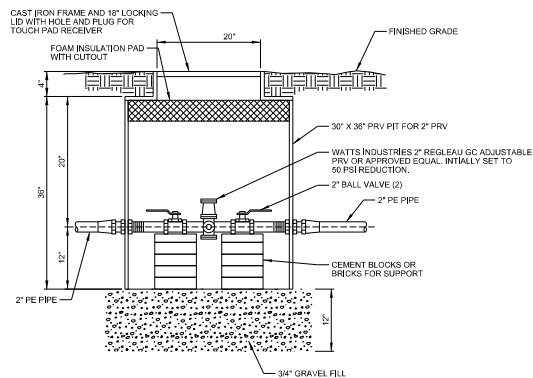


- NOTES:
1. 2" CURB STOP PER CONNECTICUT WATER REQUIREMENTS
  2. DO NOT ALLOW THE VALVE BOX BASE TO SIT DIRECTLY ON VALVE.
  3. CONCRETE SHALL HAVE A COMPRESSIVE STRENGTH OF 4,000 PSI AT 28 DAYS.

#### 4 CURB STOP DETAIL



5 PRV/METER VAULT DETAIL  
NOT TO SCALE



6 PRV VAULT DETAIL  
NOT TO SCALE



US Army Corps  
of Engineers®  
New England  
District

[illegible]

U.S. ARMY ENGINEER DISTRICT CORPS OF ENGINEERS CONCORD, MASSACHUSETTS	DESIGNED BY: H. PHILLIPS	DATE: JULY 7 1919
	DRAWN BY: HSP	SHEET NO.: 1
	SUBMITTED BY: L. THIBODIAU	CONTRACT NO.:
	PLOT SCALE: 1" = 100'	DRAWING CODE: HQ-NEB-11
	DATE:	

**PUBLIC WATERLINE EXTENSION  
NORTHFIELD BROOK LAKE DAM  
THOMASTON, CONNECTICUT**

## DETAILS 2

SHEET  
IDENTIFICATION  
C-502

SHEET 10 OF 11

